

TLL360

robust domestic lift for side/rear loaders

The TLL360 bin lift provides a practical solution to installing container collection functionality to existing and new vehicle bodies. Suitable for side & rear loading applications, TLL360 offers robust build & safe operation synonymous with the Terberg brand. TLL360 is configured with several efficiency saving & safety enhancing features as well as a host of options;

- **Integrated, compliant Emergency Stop system**

The TLL360 comes as standard with an emergency stop system that meets directive EN418:1992 for Safety of machinery. Integration with any existing vehicle stop system is made simple as the TLL360 is provided with interface cabling ready for connection.

- **'Plug and Play' electro-hydraulic installation**

Offering 'plug and play' installation TLL360 only requires hydraulic pressure/return lines* and a 24v DC electrical supply to allow hydro-electric integration with the host vehicle.

*at specified pressure & flow rate

- **Fixed two-handed control station**

The position and nature of the two handed control station ensures that operators hands and body are kept a safe distance from the lift operations.

The two-handed control station represents a proven, robust control system that halts all bin lift movement when one or more buttons are released.

- **Available in several height options**

The TLL360 is available in several height options for side mounted and rear mounted applications giving you more flexibility for your choice of body size & design.

- **Controlled and safe lifting cycle**

The lifter & roller track design employed is a tried & tested design, the lifter frame is fully constrained during the entire operation cycle and containers are secured with an un-interruptable clamping mechanism.

The TLL360 has also been developed to incorporate an 'anti-shake' feature to help reduce the risk of mechanical fatigue being introduced through operator abuse.

- **Compatibility with EN 840 -1 containers**

The TLL360 offers a capable and flexible 'bolt-on' lifting solution that is flexible enough to cope with a wide range of 2-wheeled EN840-1 compliant containers from 140 litres upwards.

- **Lifter raised warning**

TLL360 is supplied with an interface that allows the bodybuilder to provide an in-cab audio/visual alert device to warn the driver that the lifter is in the raised position when the park brake is released.

- **Compatible with Terberg dynamic weighing and RFID systems**

The TLL360 is designed to allow the integration Terberg's dynamic weighing & identification systems. Consequently, the TLL360 has a smooth operation designed to minimise 'bin bounce' and provides the vertical lifting 'window' required for accurate data recording.



TLL360

technical specifications

●-standard ○-option ○-not available

- [Chair configuration >](#)
- [Terberg Weighing & RFID preparation >](#)
- [Terberg Certifiable weighing system >](#)
- [Terberg Non-Certifiable Weighing system >](#)
- [Terberg RFID system >](#)
- [EN840.1 containers \(140-390 ltr.\) >](#)
- [EN840.2 containers \(500-1200 ltr.\) >](#)
- [EN840.3 containers \(770-1300 ltr.\) >](#)
- [Paladin containers with conversion bars >](#)
- [Mounting application >](#)
- [dimension A \(floor to platform height\) >](#)
- [Lifting capacity >](#)
- [Weight >](#)
- [Power source >](#)
- [Electrical connections >](#)
- [Waterproof ratings >](#)
- [Hydraulic requirement >](#)
- [Cycle time >](#)
- [Noise level: >](#)
- [Safety >](#)
- [Painted finish >](#)

TLL360

Single chair

-
-
-
-
-
-
-
-

Rear and Side options available
2700-3200 in 100mm increments

150 kgs

335 kgs

hydraulic / electric

16-pin / 24v

Control station to IP65, Electrical connections to IP67

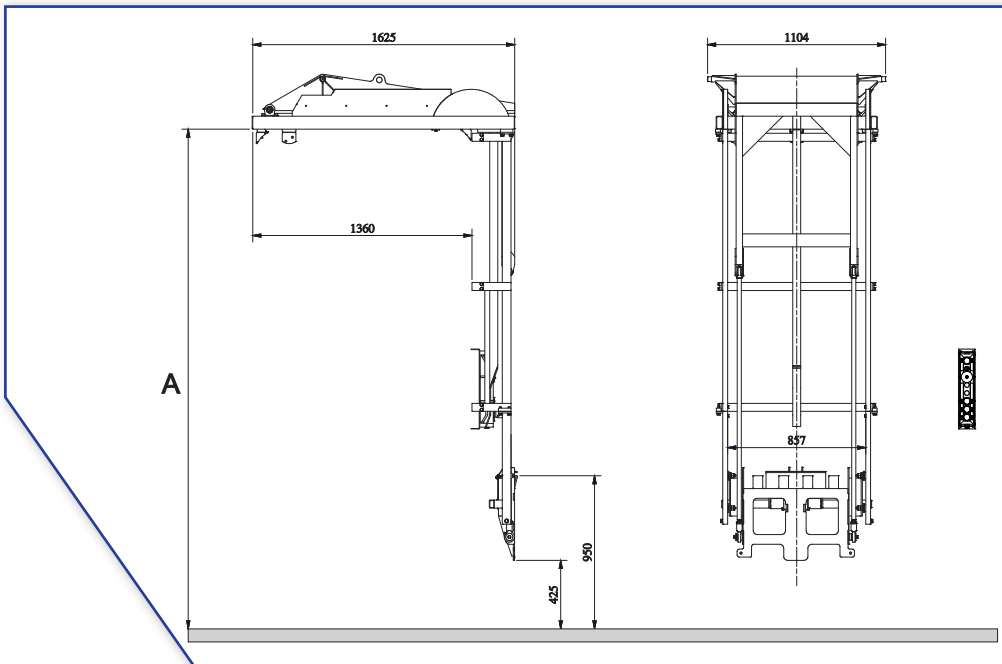
12.5 ltr/min., 100 bar

24 seconds

<65db (A)

CE Machinery Directive (2006/42/EC) Annex IIB certification, EN 1501.1 compliant

Any RAL colour as standard, non-RAL cost option



The hydraulic, electric and mechanical specifications listed above represent the most common configurations, however, certain chassis & body combinations may require these to be modified, Terberg should always be consulted before any preparation work commences



Terberg Matec UK Ltd. reserve the right to change the specification or design of our equipment at any time without prior notification



Terberg Matec UK Ltd, Leacroft Road,
Birchwood, Warrington, Cheshire, WA3 6PJ.
Tel > +44 (0) 1925 283 915
Fax > +44 (0) 1925 283 905
E-mail: sales@terberg.co.uk

www.terbergmatec.com

TLL360 - Rev. 2 EN UK - November 2011



CE