

# TCH-OL

## heavy duty bar lift

The TCH-OL is Terberg's heavy duty rave mounted manual bar lift solution, offering performance and safe operation synonymous with the Terberg brand. TCH-OL has the following key features;

- **Bolt on fixing**

The TCH-OL bar lift is designed such that it simply bolts to the RCV allowing it to easily be removed to transfer to other vehicle or in the event of accident damage, to allow the RCV to continue to work.

- **Rave mounting**

The simple rave mounting method of the TCH-OL provides a wide-open hopper for the easy loading of bulky items and sacks.

- **Flexibility**

The TCH-OL bar lift is suitable for handling and emptying a full range of domestic containers from 140 to 360 litre as well as roll top and flat top trade containers.

The open aperture and drop down rave plate make the TCH-OL ideal for hand loading of bulky items or sacks into the hopper.

- **Hold to run**

The interlocked hopper plate enables the vehicle packer to be set to complete an uninterrupted cycle each time a container is emptied.

- **Automatic Reverse Raise**

Protects the bin lift when reversing.

- **Open Hopper**

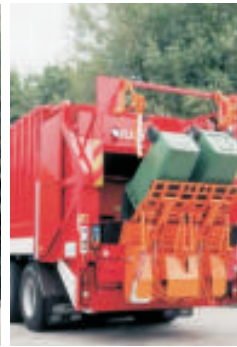
Because the TCH-OL is mounted below the rave with a separate catcher bar, the hopper is unobstructed for easy loading.

- **Waterproof**

All wiring connections are protected in a waterproof box tested to IP67 submarine standards.

- **Construction**

The bin lift is constructed from laser cut high-tensile steel to give impressive strength characteristics



# TCH-OL

## technical specifications

●-standard ○-option ○-not available

<b>Chair configuration</b> >
<b>EN840.1 containers (80-390 ltr.)</b> >
<b>EN840.2 containers (500-1200 ltr.)</b> >
<b>EN840.3 containers (770-1300 ltr.)</b> >
<b>Paladin containers</b> *with conversion bars >
<b>Lifting capacity</b> >
<b>Weight</b> >
<b>Power source</b> >
<b>Electrical connections</b> >
<b>Hydraulic connections</b> >
<b>Hydraulic requirement</b> >
<b>Cycle time</b> >
<b>Noise level:</b> >
<b>Safety</b> >
<b>Painted finish</b> >

### TCH-OL

Single bar lift chair



1000N (100kg) domestic containers / 5000N (500kg) trade containers

410kg

hydraulic / electric

16-pin / 24v DC 10A

quick release couplings (DIN 2353, NW13, NW20)

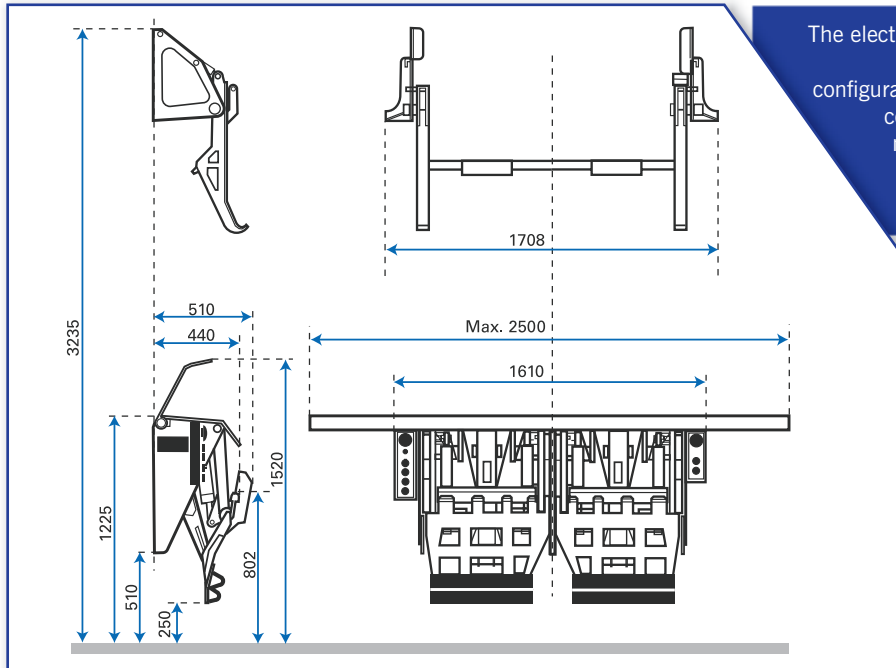
ideal 40 ltr/min., maximum 60 ltr/min., 180 bar

Manual trade 9.5 secs

<65db (A)

CE machinery directive certification and EN 1501.1 (prEN 1501.5)

Painted to customer specification



The electrical & hydraulic specifications listed above represent the most common configurations, however, certain chassis/body combinations may require these to be modified, Terberg engineering should always be consulted before any preparation work commences



Terberg Matic UK Ltd. reserve the right to change the specification or design of our equipment at any time without prior notification



Terberg Matic UK Ltd, Leacroft Road,  
Birchwood, Warrington, Cheshire, WA3 6PJ.  
Tel > +44 (0) 1925 283 915  
Fax > +44 (0) 1925 283 905  
E-mail: sales@terberg.co.uk



Terberg Machines B.V, Postbus 127,  
3400 AC IJsselstein (U), Holland.  
Tel > (31) 30 2100 600  
Fax > (31) 30 2100 610  
E-mail: info@terbergmachines.nl

www.terbergmtec.com

TCH-OL Trojan - Rev. 1 EN UK - January 2011



CE